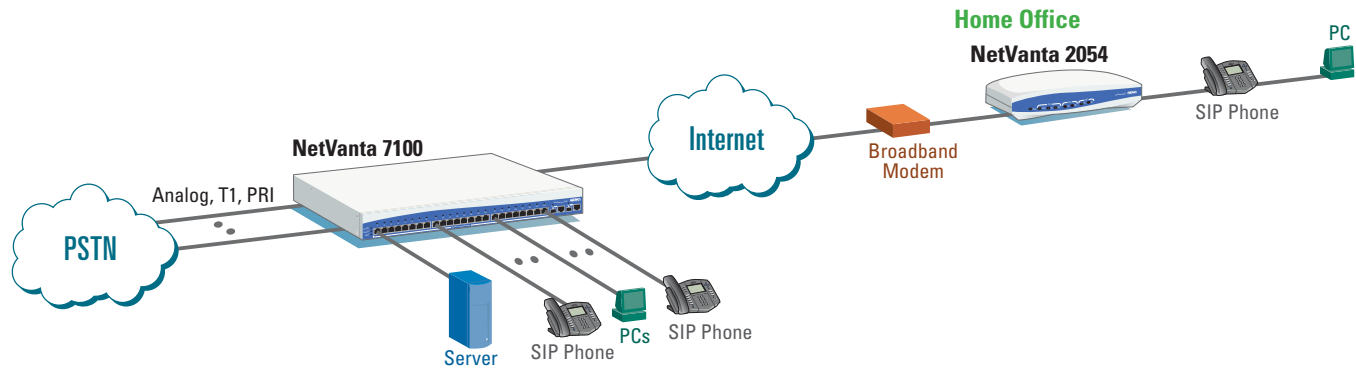


# Teleworking and Home Office IP Telephony Solution



Many businesses find it extremely useful and productive for employees or owners to work from home, provided they can achieve the same level of functionality they are accustomed to at the business office. Using the NetVanta® 7100 in combination with the NetVanta 2054 at the remote home office, work-at-home users enjoy the same level of voice and data accessibility at an affordable price.

Using the NetVanta 2054 four-port integrated router/firewall/VPN/switch with a high-speed broadband (DSL or cable) Internet circuit, home office users can access the same voice features, company email and data servers, all from the comfort and convenience of home.

When working from home, the ADTRAN® IP telephone functions as if it is directly connected to the NetVanta 7100 IP PBX. Remote users can perform

4-digit dialing, speed dial, conference, retrieve voice mails—all with familiar phone operations.

Users also may install ADTRAN's IP Softphone on their laptop or home office desktop PC. The ADTRAN IP Softphone is a software application that runs on a MS Windows® computer and emulates the desk phone.

With built-in firewall, the system provides authentication and protects against unwanted Internet attacks. The integrated VPN provides encryption and security across the Internet.

Users can now cost-effectively increase their productivity with a fully-functional remote office that offers the same features, access, and benefits as in the business office.

## Solution Features

- Ideal solution for home office or mobile connectivity
- Phone transparency over IP connectivity
- Enable remote users to have same features as the business office
- Supports IP desk phone or Softphone
- Secure Internet communications using integral firewall and VPN

**ADTRAN®**



# NetVanta 7100

## Converged IP "Office-in-a-Box"

### Product Specifications

#### IP PBX System Features

- Analog Trunks (Loop Start/Ground Start; FSK capture of Caller ID name/number; 2 integral, 10 max.)
- Analog Stations (Loop Start DTMF; 1500 feet over 26 AWG; 2 integral, 10 max.)
- Auto-Attendant (8 ports, single greeting)
- Call Detail Records (SMDR)
- Caller ID Name/Number Override (internal and external)
- Classes of Service
- Codec support includes G.711 and G.729
- Configurable Dial Plan
- Door Relay
- Door Phone
- E-mail notification of voice mail message
- Global Call Coverage Lists
- IP Stations (50 maximum; SIP hardphone or softphone)
- Least-Cost Routing
- Operator Groups
- Outgoing Number Substitution
- PRI Trunks
- Ring Groups (ring all, circular hunt group, UCD, executive)
- System Speed Dial
- T1 trunks
- Trunk Groups
- Variable length extension numbers (3-digit, 4-digit)
- Voice mail (12 hours, 8 ports)
- Virtual Extensions (20)
- Voice mail accounts (80)
- 16 DSP resources
- 64ms echo cancellation for VoIP calls

#### IP Station Features

- Call Drop
- Call Forward (All, Busy, No Answer)
- Call Forward to Outside Line (cell phone)
- Call Hold
- Caller ID Name/Number
- Call Logs
- Call Park
- Call Park Retrieve
- Call Transfer
- Call Waiting
- Conferencing (3-person)
- Do Not Disturb
- Headset jack
- Message Waiting Light
- Missed Call Indicator
- Multiple Call Appearances
- Music on Hold
- Mute
- Overhead Paging
- Personal Call Routing (Call Coverages)

- Redial
- Speakerphone
- Volume Control

#### Router Features

- RIP V1, RIP V2, OSPF, BGP, and Static routes
- PPP, PPPoE, Frame Relay WAN protocols
- DHCP Client/Server
- Class-based Weighted Fair Queuing, Priority Queuing, Weighted Fair Queuing
- Diffserv aware/mark
- MLPPP/MLFR

#### Firewall Features

- Stateful Packet Inspection
- NAT (1:1), NATP (Many:1)
- Denial of Service (DoS) Protection
- Access Control Lists
- SIP aware (B2BUA)

#### VPN Features

- 50 tunnels
- IPSec
- DES/3DES/AES encryption

#### Ethernet Switch Features

- 10/100Base-T (24)
- 10/100/1000Base-T (2)
- Two SFP slots
- Auto-Rate
- Auto-Duplex
- Auto-MDI/MDI-X
- 802.1d Spanning Tree
- 802.1p Class of Service aware/mark
- 802.1Q VLANs
- 802.3af Power over Ethernet (15.4 watts for each of the 24 ports)

#### Management Features

- Command Line Interface (CLI)
- HTTP, HTTPS (web browser)
- Telnet
- SSH

### Ordering Information

Equipment	Part #
<b>NetVanta 7100</b>	1200796L1
<b>Voice Modules (VIMs)</b>	
Analog 4-Port Station (FXS)	1200690L1
Analog 4-Port Trunk (FXO)	1200691L1
Analog 2-Port Trunk/2-Port Station	1200692L1
T1/PRI	1200695L1
<b>Network Modules (NIMs)</b>	
T1	1202862L1
Dual T1	1200872L1
ADSL	1200869L1
56/64 Kbps DDS	1200861L1
Serial	1200866L1

**ADTRAN, Inc.**  
Attn: Enterprise Networks  
901 Explorer Boulevard  
Huntsville, AL 35806

P.O. Box 140000  
Huntsville, AL 35814-4000

256 963-8000 voice  
256 963-8699 fax  
256 963-8200 fax back

**General Information**  
800 9ADTRAN  
info@adtran.com  
www.adtran.com

#### Pre-Sales

#### Technical Support

800 615-1176 toll-free  
application.engineer@adtran.com  
www.adtran.com/support

#### Where to Buy

877 280-8416 toll-free  
channel.sales@adtran.com  
www.adtran.com/where2buy

#### Post-Sales

#### Technical Support

888 423-8726  
support@adtran.com  
www.adtran.com/support

#### ACES Installation & Maintenance Service

888 874-ACES  
aces@adtran.com  
www.adtran.com/support

#### International Inquiries

256 963 8000 voice  
256 963-6300 fax  
international@adtran.com  
www.adtran.com/international

#### For the regional office nearest you, visit:

www.adtran.com/contact



ADTRAN is an ISO 9001, ISO 14001, and a TL 9000 certified supplier.

EN762C January 2006  
Copyright © 2006 ADTRAN, Inc.  
All rights reserved.

Specifications subject to change without notice. ADTRAN and NetVanta are registered trademarks of ADTRAN, Inc. All other registered trademarks and trademarks mentioned in this publication are the property of their respective owners.