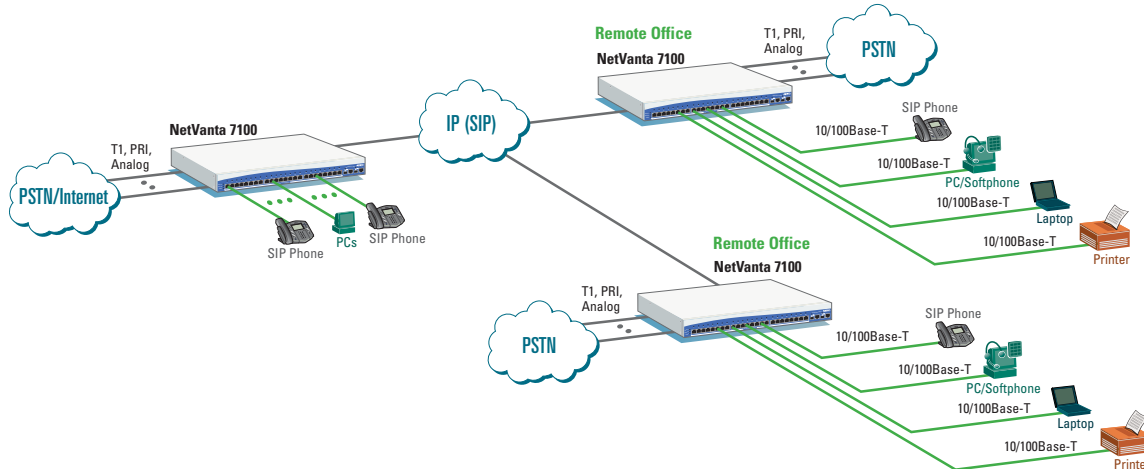


Branch Office Internetworking



Enterprises with multiple branch office locations can consolidate and simplify the network using ADTRAN®'s economical and flexible line of NetVanta® internetworking solutions.

NetVanta internetworking solutions offer a wide range of WAN access options including T1, PRI, DSL, or broadband Ethernet. A single, low-cost, high-speed pipe at each location can simplify and provide both Internet and voice service.

NetVanta solutions support SIP signaling and trunking across a variety of IP networks including private lines, Internet, or emerging broadband SIP service providers.

For branch offices that need local access to the PSTN, the NetVanta 7100 offers local call routing and a wide range

of trunk interfaces for connecting to the local PSTN. The NetVanta 7100 also offers survivability and power fail over protection which maintains a PSTN link in the event the IP connection or power is lost. E911 is supported by passing the appropriate calling information to the local service provider who interconnects with the Public Safety Answering Point (PSAP).

ADTRAN's NetVanta series also offers an easy-to-use GUI for system set up and remote administration, complete Layer 2 and 3 QoS for delay-sensitive traffic such as VoIP, firewall protection, and VPN for secured communications across the Internet, all at an industry-leading value in price, performance, service, and support.

- Consolidate circuits and reduce costs
- Reduce toll charges
- Transparent voice features
- Integrated 3/4 digit dialing
- Central or local call routing
- Supports SIP trunking
- Built-in QoS
- Firewall and VPN security
- Survivability, E911 support





NetVanta 7100

Converged IP "Office-in-a-Box"

Product Specifications

IP PBX System Features

- Analog Trunks (Loop Start/Ground Start; FSK capture of Caller ID name/number; 2 integral, 10 max.)
- Analog Stations (Loop Start DTMF; 1500 feet over 26 AWG; 2 integral, 10 max.)
- Auto-Attendant (8 ports, single greeting)
- Call Detail Records (SMDR)
- Caller ID Name/Number Override (internal and external)
- Classes of Service
- Codec support includes G.711 and G.729
- Configurable Dial Plan
- Door Relay
- Door Phone
- E-mail notification of voice mail message
- Global Call Coverage Lists
- IP Stations (50 maximum; SIP hardphone or softphone)
- Least-Cost Routing
- Operator Groups
- Outgoing Number Substitution
- PRI Trunks
- Ring Groups (ring all, circular hunt group, UCD, executive)
- System Speed Dial
- T1 trunks
- Trunk Groups
- Variable length extension numbers (3-digit, 4-digit)
- Voice mail (12 hours, 8 ports)
- Virtual Extensions (20)
- Voice mail accounts (80)
- 16 DSP resources
- 64ms echo cancellation for VoIP calls

IP Station Features

- Call Drop
- Call Forward (All, Busy, No Answer)
- Call Forward to Outside Line (cell phone)
- Call Hold
- Caller ID Name/Number
- Call Logs
- Call Park
- Call Park Retrieve
- Call Transfer
- Call Waiting
- Conferencing (3-person)
- Do Not Disturb
- Headset jack
- Message Waiting Light
- Missed Call Indicator
- Multiple Call Appearances
- Music on Hold
- Mute
- Overhead Paging
- Personal Call Routing (Call Coverages)

- Redial
- Speakerphone
- Volume Control

Router Features

- RIP V1, RIP V2, OSPF, BGP, and Static routes
- PPP, PPPoE, Frame Relay WAN protocols
- DHCP Client/Server
- Class-based Weighted Fair Queuing, Priority Queuing, Weighted Fair Queuing
- Diffserv aware/mark
- MLPPP/MLFR

Firewall Features

- Stateful Packet Inspection
- NAT (1:1), NAT (Many:1)
- Denial of Service (DoS) Protection
- Access Control Lists
- SIP aware (B2BUA)

VPN Features

- 50 tunnels
- IPSec
- DES/3DES/AES encryption

Ethernet Switch Features

- 10/100Base-T (24)
- 10/100/1000Base-T (2)
- Two SFP slots
- Auto-Rate
- Auto-Duplex
- Auto-MDI/MDI-X
- 802.1d Spanning Tree
- 802.1p Class of Service aware/mark
- 802.1Q VLANs
- 802.3af Power over Ethernet (15.4 watts for each of the 24 ports)

Management Features

- Command Line Interface (CLI)
- HTTP, HTTPS (web browser)
- Telnet
- SSH

Ordering Information

Equipment	Part #
NetVanta 7100	1200796L1
Voice Modules (VIMs)	
Analog 4-Port Station (FXS)	1200690L1
Analog 4-Port Trunk (FXO)	1200691L1
Analog 2-Port Trunk/2-Port Station	1200692L1
T1/PRI	1200695L1
Network Modules (NIMs)	
T1	1202862L1
Dual T1	1200872L1
ADSL	1200869L1
56/64 Kbps DDS	1200861L1
Serial	1200866L1

ADTRAN, Inc.
Attn: Enterprise Networks
901 Explorer Boulevard
Huntsville, AL 35806

P.O. Box 140000
Huntsville, AL 35814-4000

256 963-8000 voice
256 963-8699 fax
256 963-8200 fax back

General Information
800 9ADTRAN
info@adtran.com
www.adtran.com

Pre-Sales

Technical Support

800 615-1176 toll-free
application.engineer@adtran.com
www.adtran.com/support

Where to Buy

877 280-8416 toll-free
channel.sales@adtran.com
www.adtran.com/where2buy

Post-Sales

Technical Support

888 423-8726
support@adtran.com
www.adtran.com/support

ACES Installation & Maintenance Service

888 874-ACES
aces@adtran.com
www.adtran.com/support

International Inquiries

256 963 8000 voice
256 963-6300 fax
international@adtran.com
www.adtran.com/international

For the regional office nearest you, visit:

www.adtran.com/contact



ADTRAN is an ISO 9001, ISO 14001, and a TL 9000 certified supplier.

EN770C January 2006
Copyright © 2006 ADTRAN, Inc.
All rights reserved.

Specifications subject to change without notice. ADTRAN and NetVanta are registered trademarks of ADTRAN, Inc. All other registered trademarks and trademarks mentioned in this publication are the property of their respective owners.